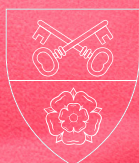


Parish News

Barley | Newchurch | Roughlee | Sabden Fold | Spenbrook

June 2022

**Curates Thoughts
What's On
Parish Councils
Jubilee Event**



St. Mary's Church
Newchurch in Pendle BB12 9JR

Curates Thoughts

My mother's wheelchair was well and truly stuck in the deep and even layer of chippings down the side of the house; try as I might, I could move it neither forwards nor backwards. And then suddenly and apparently miraculously, two young guardsmen, resplendent in their scarlet tunics, appeared, took a handle each and pushed my mother into the garden. Not, it has to be added, without quite a bit of huffing and puffing!

And so we made our grand entrance into the Royal Garden Party and one of the most memorable days of my mother's life. Everything at Buckingham Palace had been immaculately prepared (except perhaps for the chippings). Just as one would have expected, the grounds had been manicured within an inch of their life and the cucumber sandwiches were simply to die for.

At the appointed hour, the "on-duty" Royals appeared and began to move slowly through the crowd of guests in lanes carefully cleared for them by the Yeomen Warders. To my mother's absolute delight, a Gentleman-at-Arms selected us to meet Her Majesty Queen Elizabeth the Queen Mother. For 5 minutes, my mother felt she was the most important person in the world and indeed, to the "Queen Mum", she was. Her ability to put someone totally at their ease, to make them the centre of attention, and truly to listen to what was being said and react to it, was truly remarkable. Such fluency takes a lifetime of practice and devoted service to perfect.

Her granddaughter, Princess Anne, the Princess Royal is the Colonel-in-Chief to the Army Corps in which I spent most of my adult life. As a consequence I have been fortunate enough to meet her on many occasions and I have always found exactly the same qualities of service to shine through. Her dedication to everything with

which she becomes involved is equally astonishing. But one word of advice when dealing with her – never, ever try to bluff an answer to one of her questions: she's a great judge of character, immensely knowledgeable and will see through you immediately if you're tempted to "try it on"!

In between these two remarkable ladies sits that other remarkable woman, whose 70 glorious years on the throne we celebrate this month. At her coronation, Her Majesty the Queen took oaths of loyalty and allegiance to us, her people, oaths from which she has never deviated and which have ruled her life. Living in a palace, surrounded by servants and advisers, it would be oh so easy for her to become detached from the needs of the people she swore to protect; but this she has never allowed to happen. And whilst the nature of her duties in our constitutional monarchy are largely ceremonial, we should perhaps never underestimate the significance of those weekly chats with the Prime Minister and her ability to warn, based upon more than 70 years of experience on the national and international stage.

At the heart of her life of service is the Queen's own Christian faith and her role as Supreme Governor of the Church of England. (Note: she's the Supreme Governor, not the Head: that role's already been taken!) As the Bishop of Worcester once said:

"Her Majesty The Queen is a most wonderful example of a life completely devoted to Christian service. The Church, this nation, the Commonwealth and the world have benefitted immeasurably from all she has given during her long reign. We give heartfelt thanks for her and pray for her continued health and happiness."



Words which I believe are as true today as when they were uttered six years ago on the occasion of Her Majesty's 90th birthday. We have been – and are – truly blessed to have her as our Head of State.

God save the Queen!

Barley Parish Council

The Platinum Jubilee weekend is almost here and final arrangements are being made for the 3 villages celebration event in the field near Whitehough. I have been supporting the organising committee and it's staggering how much time is required to get things moving. The tasks included, arranging marquees, attracting stalls and sponsors, preparing for events such as the procession of floats with associated road closures, music bands, competitions such as tug of war and It's a Knockout, raising funds through raffle tickets, right through to security and getting rid of the rubbish and much more. Well done to all those volunteers and I hope the weather is dry and it all goes well.

On the same theme, the WI have put together a great PJ display on the car park and I would urge you all to go and have a look and contribute to their charity of the year, the Pendle & Rossendale Mountain Rescue, using their new donation box in the midst of the display.



On to Council matters, I can say with some certainty that parking enforcement will start on the Turning Circle during June. Residents will be notified of the start date in advance through social media and a letter drop to village centre residents. Photographs will be taken of vehicles parking on the area during the day and downloaded to our parking company, Park with Ease, who will use DVLA records to issue parking charge notices (fines). Parking tickets will not be issued.

As I reported last month, the Council has a new 'state of the art' defibrillator in the bus shelter should one be needed (hopefully not). The North West Ambulance Service came to the Village Hall and gave a fascinating and humorous presentation about Defibs plus a demonstration on how they work. Attendance was disappointing given there was an open invitation to attend but for those that were there they will be ready should the worst happen.

A couple of weeks ago I attended a visit to Boothman Wood with members and officers of the Borough Council. We looked at the tonnes of material that had been tipped there (which can clearly be seen from the road) and the general condition of the site and the proliferation of buildings. We also discussed the flooding issues that have recurred on Barley New Road. I am hoping, maybe anticipating, that the developer will be submitting plans in the near future to remedy some of the issues raised at the visit.

On the planning front, the application to extend Cross Lane Farm House was withdrawn after PBC officers recommended refusal and a new application has been received to build 5 new houses in the field next to Whitehough Grange.

The proposed drainage and surface improvement works on the central section of Heys Lane could be back on again if agreement can be made with the owner of Boothman Wood to undertake essential works on the land above Heys Lane

Congratulations!

Finally, I am sure everyone will join us in wishing Poppy Kirkbride and Robbie Taylor health, wealth and happiness following their wedding at St Mary's Church.



Narrowgates in the spirit



What's On

Barley WI

The Barley Women's Institute meet on the first Wednesday of the month at the Village Hall. In February we had a great evening in the company of Malkin Morris Dancers and in March we have a demonstration on Felting. Each month is very different. We have a great age span from 20 somethings to 80 somethings so ladies please come along and spend an evening with us and try before you buy.

In September this year Barley WI celebrate 80 years since its formation and we have held our meetings at the Barley Village Hall ever since!

Barley Village Hall

Barley Village Hall is open for hire! It's been a strange few months but we are open and have our regular groups using the hall every week. If you ever want to book the hall for a social event such as birthdays, christenings, weddings or various occasions then please feel free to email us.

We have various rooms to book and a kitchen to use if required.

The hall is the heart of the community. We will be investing in the hall over the coming year. If you would like to help out or join our committee then please let us know.

You can contact us by emailing **barleyvillagehall@gmail.com**



COFFEE AND CHAT

Second Wednesday of each month

Barley Village Hall

10am – 12 noon

All welcome, not just the old folk

£2 gets coffee (or tea) and cake!

CARD MAKING CLASS

First and Third Monday of each month

Barley Village Hall

1pm – 3pm

For details contact Valerie

Tel 01282 691850

Pendle Patchers

The Pendle Patchers have continued to meet on the 2nd and 4th Tuesdays of the month, no workshops during May, instead we have continued to work on individual projects. At our last meeting we had three of the group doing machine sewing, two knitting, one doing cross stitch and another doing embroidery embellishment on her wet felted piece, plus one dropping in for coffee. So, whatever your craft interest is, you are welcome to bring it along to do while having a chat and a brew.



We heard from one member of her success in making the Jubilee Pudding, with her personal adaptations, and her subsequent broadcast about it on a phone-in on Radio Lancashire. We are all hoping Cynthia's Jubilee Pudding will appear at our next Jacob's Join. Whatever your talents, you are welcome to come along to our group. We'll be meeting on Tuesdays 14th and 28th June from 1.00pm at Barley Village Hall.

tel. **01282 602449**

email : **gilbeeke@btinternet.com**.

Pendle Forest History Group

Wednesday 15th June 2022

7.30pm at Barley Village Hall

Business meeting and items of Interest.

Members £2.00, Visitors £3.00

Email: **pendleforesthistory@gmail.com**

Barley Chapel

Barley Chapel has been at the heart of village life for the past 122 years.

It has weathered many storms. Many of you will have fond memories of Harvest festivals, Carols by Candlelight, Barley to Bethlehem, weddings and christenings at the Chapel.

Not to mention the wonderful shows, birthday parties, toddler groups, table tennis and of course FOG club. The chapel has been there for us all in some way or another and stands as a reminder of times gone by.



The congregation at Barley has fallen because of many changes in our daily lives, and most recently due to Covid resulting in the chapel facing extreme financial difficulties and potential closure. With your help this can be averted.

Unfortunately, we have uncovered major problems with the chapel roof which needs to be addressed in order that the building continues to be functional for generations to come.

We can apply for grants to fund the work but as part of the grant process we need to evidence that the chapel building is not only used for worship but for community purposes as well. We do need to generate some income and this is where we are looking to people in the villagers to help us. We are looking to open up the Chapel occasionally as a 'Pop Up Café' just serving hot and cold drinks and cakes to try and capitalise on all the visitors that now visit Barley to go up the Sculpture Trail. We need volunteers to staff the café. If we can get the volunteers, the commitment will not be too onerous as we can staff on a rota basis.

We also need your ideas on how we can use the chapel building.

Please contact either Lorraine (07966261520) or Angie (07967121031 or 605090) to have a chat without any obligation at all or if you have any ideas on how we can use the Chapel.

Look forward to hearing from you

Artisan Craft Fair at Barley Chapel

Barley chapel at the foot of Pendle hill in the beautiful village of Barley are looking to start artisan craft fairs. Would anyone be interested in having a table (£20 a table per day) the first date would be Weekend 23/24 July. If anyone interested please private message me.

Barley has around 50,000 visitors a year and all have to walk past the chapel to go up Pendle Hill or the Sculpture trail so foot fall is fantastic!



Goldshaw Booth Parish Council

Including live music, food stalls, WI cakes, dog agility show, Gin Tin, Beer tent, bouncy castle and It's-A-Knockout, the Pendleside Platinum Jubilee event promises to be a ... KNOCKOUT!!

Whether you are appearing on the back of a float, hosting a stall, flag waving, anthem singing, cake baking, tug-o-warring, performing, playing, setting up, clearing up, or simply eating, drinking and rolling up for a jolly good time we wish you all the very best for the Pendleside Platinum Jubilee celebration on Thursday 2nd June and, of course, huge congratulations to Her Majesty for reaching her Platinum Jubilee!



Thank you to all those involved in the organising of this truly majestic event; from Goldshaw Booth, Ruth White, Anthony Dawson, Kathleen Wilkinson, Christine Smith, Frank Shiers and Carl Ryder, thank you, we'll see you all there :)

Thank you also to those who helped facilitate the Annual Parish Meeting on Tuesday. This was an opportunity for all residents to share their views, thoughts and ideas on the developments within the Parish over the past 12 months and their hopes for the coming year.

The meeting was Chaired by Beccy Murrell who summed up the years achievements of the Parish Council including: completion of the Sparable Lane steps, completion of the CCTV set-up in Newchurch and the forming of the Events Committee and events, but perhaps, the greatest achievement – one in which we can all share and which can be easily overlooked – is the continued growth of the sense of Community!

Well done all for commenting, challenging, contributing, criticising and cheering. As Freddie said on his tree painting for the Annual Meeting – Together We Can Grow!

As the sense of Community grows, so does the Parish Council. Welcome to our new Parish Councillors Laura Standring and Beccy Murrell. Laura is bursting with energy, is a driving force of the Events Committee and is Chair of the Friends of Newchurch School group. As well as having a keen interest in environmental issues, as a previous Parish Councillor Beccy brings a wealth of experience and knowledge. Welcome both!

Ongoing projects include; Access-4-All to the park, community garden areas, installation and refurbishment of play equipment, refurbishment of the Boskins/Notice Board area in Newchurch.

The Best Kept Village preparations are gathering pace. From washing and weeding to painting, planting and picking – another opportunity for all residents to 'get stuck in'.

Keep an eye on the GBPC Facebook page for group activities with banter, brews and biscuits! Judging is the 1st June to 17th July.

And remember, it's not all hard work.... Watch this space, and the GBPC FB Group for news of upcoming events. First up, the Community Summer BBQ!

Kindest regards,
Ainsley Macadam
s.a.macadam786@btinternet.com

Friends of Newchurch

100 Club

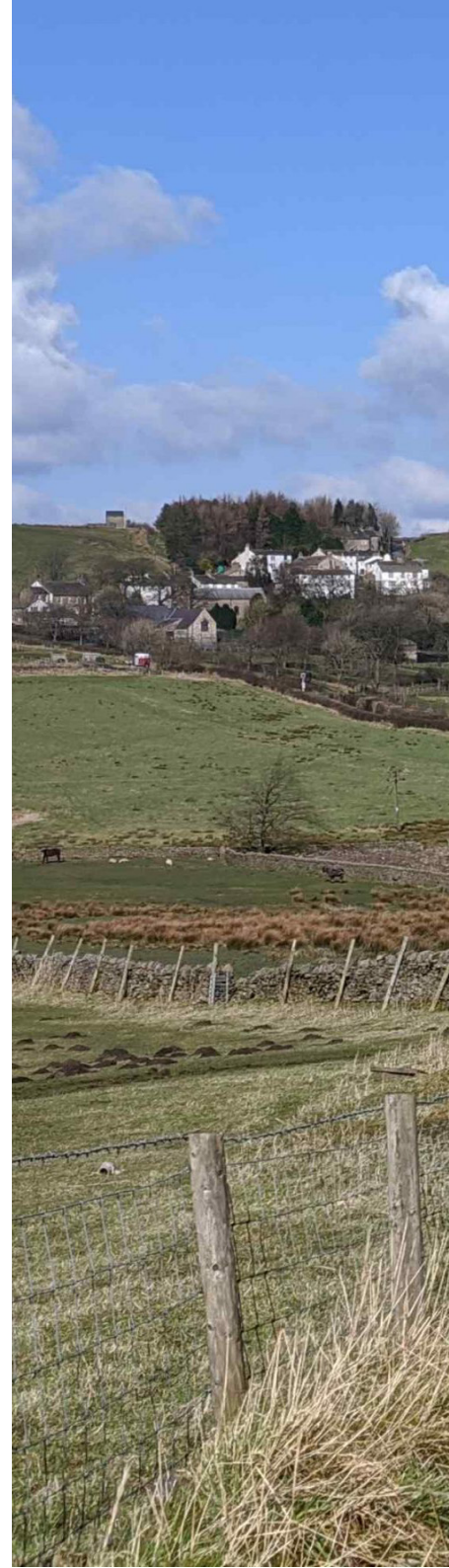
The winners of the 100 club draw for for St Mary's School were:

1st prize – no. 20 Sue Mayor – £25

2nd prize – no. 14 Maureen Stopforth – £20

3rd prize – no. 94 Claire Loach – £15

Congratulations to the winners and as always, thank you to everyone taking part.



Next Parish Council Meeting

(please check social distancing/ requirements nearer the time):

Tuesday 14th June 2022, 7.15pm, Barley Village Hall

Copies of Meeting Agendas & Minutes from Previous Meetings (etc.):

www.goldshawbooth.org.uk

Planning Applications:

Full: Variation of Condition: Major: Vary Condition 5 (Affordable housing) of Planning Permission 13/13/0531P to allow sale as a market property at a reduced rate.

Spenbrook Mill Spenbrook Road Newchurch In Pendle Lancashire BB12 9JH
Ref. No: 22/0244/VAR

Full: Erection of a single storey porch to the front elevation.

39 Newchurch Newchurch In Pendle Burnley Lancashire BB12 9JRRef. No: 22/0234/HHO

www.goldshawbooth.org.uk

Goldshaw Booth Parish Council Facebook page:

<https://www.facebook.com/groups/915228842660833>

Church Platinum Display

This display will be available to view in church until 1pm on the 4th and 5th of June.

Morecambe Bay Walk

The walk went well and thank you to those who sponsored me.

Susan Procter



Pendleside Platinum Jubilee 2022

Floats and Procession

Please note that the road is closed in both directions from 12.15pm - 1pm

- Floats congregate at 11.30am on field below Thorneyholme Square on west side of Barley Road
- Children gather at Boothman Wood at 12pm
- Float procession begins at 12.15pm along Barley Lane, past Boothman Wood
- Band and children join the procession from Boothman Wood
- Procession makes it's way to the field for 1pm

Stage and Marquee

- National Anthem 1pm
- Malkin Morris performance 1.30pm
- Jessica Mary Music at 2.30pm-3pm, 3.30pm - 4pm and 4.30pm - 5pm
- The Real Village People 5pm

Kids Zone

- Punch and Judy 2pm
- Junior Tug of War 2.30pm
- Maypole Dancing 3pm
- Punch and Judy 3.30pm
- Dog Show 4pm
- Penalty Shootout 4.30pm

Show Ring

- Official opening by VIPs at 1pm
- It's a Knockout from 2.30pm
- Tug of War from 4.30pm

Event Field

- Stalls and stands set up from 9am
- Field opens to the public at 12pm
- Official opening at 1pm
- Field closes for the day event at 6pm for all non-wristband/ticket holders
- Evening Event begins at 6:45pm for wristband/ticket holders only

Evening Event:

- Opens at 6.45pm for wristband/ticketholders only
- Food served 7pm-9pm
- The Real Village People 7pm
- Just John and Paul 8pm
- Speeches, raffle and auction 8.45pm
- Piper and Lighting of the Beacon from 9pm
- Just John and Paul 9.15pm
- Crash 10pm



facebook.com/groups/pendlesideplatinumjubilee2022



PENDLESIDE PLATINUM JUBILEE PARTY

2nd June 2022 · Jubilee Field, Whitehough

(access via gate on Barley New Road)

FUN AFTERNOON FOR ALL

PROCESSION FROM HAPPY VALLEY AT 12PM
FOLLOWED BY OFFICIAL OPENING AT 1PM

LICENSED BAR & COCKTAILS
W.I. TEA AND CAKES • BBQ

LIVE MUSIC FT. JESS, ROUGHLEE RUFFIANS,
THE REAL VILLAGE PEOPLE • TUG OF WAR
IT'S A KNOCKOUT COMPETITION
MALKIN MORRIS • BIRDS OF PREY
KIDS ZONE • BOUNCY CASTLE • FACE PAINTING
ALPACAS • PUNCH & JUDY • STALLS

12-6PM
FREE ENTRY

EVENING EXTRAVAGANZA

PARTY STARTS 6.45PM • TIL LATE

£10 IN ADVANCE • BOOK EARLY!
SEE POSTERS FOR FULL DETAILS

WITH THANKS TO
OUR SPONSORS

Orbit
MAKE IT HAPPEN



codus

CHARLES LOUIS
HOMES & MORTGAGES

facebook.com/groups/pendlesideplatinumjubilee2022



PARTY STARTS AT 6:45PM · TIL LATE

PENDLESIDE PLATINUM JUBILEE PARTY NIGHT EXTRAVAGANZA

2nd June 2022 · Jubilee Field, Whitehough

(access via gate on Barley New Road)

LIVE MUSIC · BAR · COCKTAILS

FEAT.



TOP LOCAL BAND

JUST
JOHN & PAUL

BRITAIN'S BEST BEATLES TRIBUTE

★ **THE REAL
VILLAGE PEOPLE**

YOUR FRIENDS & NEIGHBOURS

BEACON LIGHTING & PROMS 8:45-9:15PM
ACCOMPANIED BY PIPE SGT DEREK DERBYSHIRE

★ **TICKETS £10**
PAY BY 30 MAY

INCLUDES HOG ROAST (LIMITED NUMBERS
AVAILABLE) OR VEG OPTION (MUST PRE-BOOK)

★ **BOOK EARLY**
- NO TICKET, NO ENTRY!
ANY TICKETS LEFT WILL BE £15 ON THE DAY

★ AGENTS: GLEN WATSON (ROUGHLEE), ★
ANTHONY DAWSON (NEWCHURCH),
RITA SEYMOUR (BARLEY)

WITH THANKS TO
OUR SPONSORS

Orbit
MAKE IT HAPPEN



codus

CHARLES LOUIS
HOMES & MORTGAGES

The Real Village People

Please do come and show your support to this amazing bunch of people!

Your friends and neighbours that have come together to put on a fantastic performance for you all.

They have put in months of practice, and it would just be great to see everyone there cheering them on!



Meet the Band (left to right in photo)

Garry Grimshaw – Guitar

Lee Hunt – Guitar, drums and vocals

Chris Wilson – Bass

Kerry Shuttleworth – Vocals

Richard Lewis – Saxophone

Juliana Anderiesz – Vocals

Lynda Lewis-Watson – Vocals

Meg Davey – Vocals

James Hunt – Drums

Roughlee Parish Council

The month of May saw both the Annual Meeting of the Parish Council and our regular monthly meeting. The former is a legal requirement and involves the presentation of annual reports and the appointment of officers for the coming year. Andrew Walker was elected as Chair and Simon Cronshaw as Vice-Chair. Colin Williams who has been Vice-Chair of the Council for many years has decided to relinquish the position although he will maintain his association with the Parish Council. The whole village owes a great debt of gratitude to Colin for his very hard work over many years.

The normal monthly meeting was also involved with procedural matters relating to Standing Orders, the annual audit and insurance. Perhaps most importantly the Memorandum of Understanding between the Parish Council and the Village Centre Committee was signed by both parties. This sets out the duties and responsibilities of both bodies for the future.

June promises to be a busy month in the village. The Queen's Platinum Jubilee will be celebrated on 2nd June and represents a joint event with Barley and Goldshaw Booth Parish Councils. The joint organising committee has been very busy and a great day is promised starting at 1pm on the Jubilee field between Whitehough and Narrowgates, with floats processing from Happy Valley at 12pm. We hope there will be a great turnout from the three villages.



COME AND
CELEBRATE
WITH US

As previously notified the annual Parish Gathering will be held at 7pm on Monday 20th June in the Village Centre. We aim to provide an informative and entertaining evening followed by a glass of wine and snacks. Please make every effort to attend.

Judging for the Best Kept Village competition is now underway and the FORA group has been very busy keeping the village tidy, looking after the planters and revarnishing the benches. Things are certainly looking good! We can all help by picking up any litter you see.

Finally, let's hope for fine summer weather throughout June but, in particular, on the 2nd.

Andrew Walker



Roughlee Village Centre - Dates for 2022

Thu 2 June	Pendleside Platinum Jubilee
Sat 18 June	Pendle Pubwalk
Sat 13 August	Duck Race
Sun 30 October	Pendle Halloween Festival
Sat 5 November	Witch Wines
Fri 2 December	Dickensian Christmas Fayre
Sat 17 December	Roughlee Christmas Boogie

Full details will be advertised at www.roughlee.org.uk

Don't forget! RVC is available for hire to private events at very reasonable prices. See the website for further details or call Gail on 01282 696997.

Parish Contacts

Barley with Wheatley Booth

www.barleyparish.uk
www.barleyvillagehall.org

Meetings are held at 7.30pm in
Barley Village Hall on 2nd Wednesday
in the month

Parish Council Chairman

Derek Heap t: 692 264
derekheap1@googlemail.com

Parish Council Clerk

C Heap
clerk@barleyparish.uk

Goldshaw Booth: Newchurch, Sabden Fold & Spenbrook

www.goldshawbooth.org.uk

Meetings are held at 7.15pm at Barley
Village Hall on the 2nd Tuesday of every
month.

Parish Council Chairman

s.a.macadam786@btinternet.com

Acting Council Clerk

Heather Robbins
clerk@goldshawbooth.org.uk

Roughlee Booth

www.roughlee.org.uk

meetings are held at 7pm in
Roughlee Village Centre on the 1st
Monday of the month.

Parish Council Chairman

Andrew Walker t: 07808 003035
ajwplanning@hotmail.com

Parish Council Clerk

Mary Reed t: 611 126
roughleeclerk591@gmail.com

MP & Councillors

MP for Pendle

Andrew Stephenson t: 01282 614 748
andrew.stephenson.mp@parliament.uk

Councillor

Carlo Lioni
carlo@lioni.co.uk

St. Mary's Church

Vicar

Rev. Julie Smith t: 613 206
jls446439@gmail.com

Curate

Rev. David Hargreaves
da_hargreaves@hotmail.com

Warden

Kathleen Wilkinson t: 617 971
brianwilco@tiscali.co.uk

Warden

Douglas Bull
douglas@douglasbull.co.uk

Secretary

Virginia Crewe
familycrewe@hotmail.com

Treasurer

Peter Crewe
familycrewe@hotmail.com

Messy Church

Safeguarding Officer

Lesley Muffitt t:694 575
3muf@talktalk.net



St Mary's Church

Our Parish Church exists to be the people of God, through
faith in Jesus Christ in the power of the Holy Spirit,
worshipping Him, making disciples and serving others.

Services at St. Mary's in May

Sunday 5th June 9.30am	Holy Communion Service for Pentecost and The Queen's Jubilee
Sunday 12th June 9.30am	Holy Communion Service for Trinity Sunday
Sunday 19th June 9.30am	BCP Holy Communion Service
Sunday 26th June 9.30am	All Age Service of the Word

Everyone Welcome to any of the services.

Contact the Vicar for more details

Articles for the June edition should be sent to Lee Hunt lee@underpendle.com
by 27.06.2022