

Parish News

Barley | Newchurch | Roughlee | Sabden Fold | Spenbrook

July 2022

**Vicars Thoughts
What's On
Parish Councils**



St. Mary's Church
Newchurch in Pendle BB12 9JR

Reverend Julie's Thoughts

I wonder what you think of when you hear the word Summer, for many this year the highlight will be the return of in-person festivals and I write this having watched some of Glastonbury from the comfort of my sofa!! I've concluded that I must be getting old as I hadn't heard of many of the acts, but I thoroughly enjoyed singing along to Paul McCartney and The Pet Shop Boys. And yes, I did know more Crowded House songs that I thought to quote the bands own saying but their most famous hit seems most appropriate for festival season, 'Weather with you' with its chorus 'Everywhere you go,



always take the weather with you'.

Even now decades after it was first released there is much debate about what it all means.

The general consensus seems to be that it's how you make your own weather (not literally for that we would need the Kate Bush song Cloudbusting and incidentally did you know that originally she wanted to call her song Running up that Hill (a well-deserved hit again) just a Deal with God but her record producers thought that would put people off and religious countries wouldn't play it). Is it sunny weather? Are you happy? Or is it stormy weather? Is your life a mess?

Listening again to 'Weather with you' got me

thinking about weather in the Bible. I've lost count of the number of times people ask me to 'have a word with God' and ask for the type of weather needed for an event. The Bible surprisingly has quite a lot to say about the weather it even mentions snow a few times which is rare in the countries it mentions!! (Revelation 1:14, Matthew 28:3, Isaiah 1:18, Psalm 51:7, Job 37:6, Psalm 147:16).

I've noticed that it can rain quite a bit in this part of the world and the Bible mentions rain frequently and not just in the story of Noah and the flood. Jesus tells a story about two housebuilders in the gospel of Matthew and the house that survives the storm is the one built on rock a metaphor for solid foundations. You may remember the Sunday School song 'The Wise man built his house upon the rock'.

Many people know the verses about the wise man building on rock and the foolish man building on sand and adults and children alike have enjoyed the whooshing and actions of the chorus but for me it is the third verse that is important as it tells us 'So build your life on the Lord Jesus Christ' and this time the chorus says that 'blessings will come down as the prayers go up'.

Whatever the weather this Summer I pray that you will build your life on the teachings of Jesus and that He will bless you.

Blessings

Rev'd Julie



Barley Parish Council

The Platinum Jubilee proved to be a great day for all who attended, the weather was kind and so many turned out on the day making it a memorable social event for all three villages. The procession got things off to a great start, the field events in the afternoon kept us all entertained and the bands all played great music in the evening, which got many up dancing until late into the night. But the chance to meet old friends and acquaintances was the highlight for most people after the last couple of years.

On behalf of Barley I would like to thank all those who played their part on the day, Mark Hartley and family for providing the field, Carl for providing the marquee, the Platinum Jubilee Committee for all their outstanding voluntary work organising and administering, those who supported and sponsored the event and all those who took part whether in the procession, serving food, running events or cleaning up.



And finally, well done to the boys who brought the big trophy home to Barley again.

Barley Champion Tug-of-War Team



On a smaller scale, the Annual Parish meeting attracted almost 50 residents last week and there were presentations from the Women's Institution (Jan Heap), the Village Hall (Tom Cosway, the Chapel (Angie Hargreaves) and myself on behalf of the Parish Council.

We had not met since 2019 and so I had to condense three years in to 30 minutes so I summarised events reporting on projects the PC had completed and provide an update on the bigger issues including the car park management arrangements with Park with Ease Ltd, village parking and new road lines and some planning issues including our concerns relating to Boothman Wood.

We discussed the Council's finances and future projects, including car park improvements and village green maintenance which are planned for 2022, and possible improvements to Heys Lane planned by LCC and PHLP.

The main announcement was that parking charges would be introduced on the Turning area from 1st July. As residents will be aware, the Parish Council lost control of parking on the turning area a number of years ago. The consequence has been that inconsiderate parking has prevented the turning area from providing its primary function for a range of vehicles seeking to turn, has contributed to congestion in the village centre, introduced safety hazards and has devalued the village centre piece to a car park.



The terms and conditions for anyone parking on the turning area are set out on the two signs on either side of the area – the parking charge is £60. No parking tickets will be issued. Those recorded parking on the area by Councillors or others, between 0800hrs and 1800hrs, could well receive a parking fine from Park with Ease.

It is with a degree of sorrow that the Council has arrived at this position but we strongly believe that the Turning Area has a great value to our village and little value as a car park.

Other matters in brief, drainage works on the Village Green, improvements have been made to the electrics in the toilet block and two new handwash units installed.

With summer now here I hope we are in for some sunshine and that everyone travelling on holiday by plane can get there and get back avoiding the cancellations and airport chaos

What's On

Barley WI

The Barley Women's Institute meet on the first Wednesday of the month at the Village Hall. In February we had a great evening in the company of Malkin Morris Dancers and in March we have a demonstration on Felting. Each month is very different. We have a great age span from 20 somethings to 80 somethings so ladies please come along and spend an evening with us and try before you buy.

In September this year Barley WI celebrate 80 years since its formation and we have held our meetings at the Barley Village Hall ever since!

Barley Village Hall

Barley Village Hall is open for hire! It's been a strange few months but we are open and have our regular groups using the hall every week. If you ever want to book the hall for a social event such as birthdays, christenings, weddings or various occasions then please feel free to email us.

We have various rooms to book and a kitchen to use if required.

The hall is the heart of the community. We will be investing in the hall over the coming year. If you would like to help out or join our committee then please let us know.

You can contact us by emailing barleyvillagehall@gmail.com



COFFEE AND CHAT

Second Wednesday of each month

Barley Village Hall

10am – 12 noon

All welcome, not just the old folk

£2 gets coffee (or tea) and cake!

CARD MAKING CLASS

First and Third Monday of each month

Barley Village Hall

1pm – 3pm

For details contact Valerie

Tel 01282 691850

Pendle Patchers

The Pendle Patchers group are continuing to meet in Barley Village Hall on the second and fourth Tuesdays of the month from 1.00pm through the summer, our nimble fingers don't get a break.

We welcomed a new member in June, someone who came to try wet felting back in April and has decided to join us on a more regular basis.

She brought along some embroidery to do, and we are encouraging members to come along with any sewing, knitting or crochet project they want to bring. If there are any other parishioners (or readers of the newsletter from more distant parts!) who would like to come to our group, you would be very welcome to join us. If you want any more information, please email me at gilbeeke@btinternet.com



tel. 01282 602449

email : gilbeeke@btinternet.com.

Pendle Forest History Group

Wednesday 20th July 2022

7.30pm at Barley Village Hall

A talk by Harold Hoggarth on

"The English Civil War in Lancashire"

Members £2.00, Visitors £3.00

Email: pendleforesthistory@gmail.com

Barley Chapel



Barley Chapel has been at the heart of village life for the past 122 years.

It has weathered many storms. Many of you will have fond memories of Harvest festivals, Carols by Candlelight, Barley to Bethlehem, weddings and christenings at the Chapel.

Not to mention the wonderful shows, birthday parties, toddler groups, table tennis and of course FOG club. The chapel has been there for us all in some way or another and stands as a reminder of times gone by.

The congregation at Barley has fallen because of many changes in our daily lives, and most recently due to Covid resulting in the chapel facing extreme financial difficulties and potential closure. With your help this can be averted.

Unfortunately, we have uncovered major problems with the chapel roof which needs to be addressed in order that the building continues to be functional for generations to come.

We can apply for grants to fund the work but as part of the grant process we need to evidence that the chapel building is not only used for worship but for community purposes as well. We do need to generate some income and this is where we are looking to people in the villagers to help us. We are looking to open up the Chapel occasionally as a 'Pop Up Café' just serving hot and cold drinks and cakes to try and capitalise on all the visitors that now visit Barley to go up the Sculpture Trail. We need volunteers to staff the café. If we can get the volunteers, the commitment will not be too onerous as we can staff on a rota basis.

We also need your ideas on how we can use the chapel building.

Please contact either Lorraine (07966261520) or Angie (07967121031 or 605090) to have a chat without any obligation at all or if you have any ideas on how we can use the Chapel.

Look forward to hearing from you

Artisan Craft Fair and Take Away Afternoon Tea

Barley Chapel

**Saturday 23rd and Sunday
24th July**

10am – 4pm

Refreshments Available

Enquiries 07967 121031

Free Admission

Goldshaw Booth Parish Council

Flower garlands, crowns and rushes can only mean one thing, it's Rushbearing time again!

The Rushbearing celebration is a tradition spanning well over 100 years but preparations are carried out in much the same way. Rushes are picked from the fields, along with wild flowers and those from gardens, to be arranged, formed into a crown and carried to Newchurch village centre where the Rushbearing Queen is crowned – and this year there are two Queens!



Following on from this year's celebration (16th July) will be the Summer BBQ (Newchurch village park from 4pm – Roughlee'ers and Barley-ites welcome too!). Burgers, bangers, cakes and sticky buns for sale to raise funds for future Parish events. Come and try your hand at Giant Jenga and for those who think a two legged race is too easy try 3-Legged! To this end Together in Goldshaw! (TIG!) are working hard to spruce up the park for the Summer BBQ (as well as the villages). Picnic benches washed & ready to stain, weeds on the run, strimmers re-charged & at the ready, swings to paint and fruit bushes to plant – join us for a few hours and partake in wraps for lunch, and brews and biscuits. Details are shared on the Goldshaw Booth Parish Council Facebook group.

One maintenance issue is the fight to eradicate the Himalayan Balsam plant. Although considered pretty, this is an invasive species which overwhelms plants native to Britain and, if left, can spread like wild-fire. TIG! will be looking at a Balsam Bashing plan but in the mean-time residents can help by checking their own gardens/land and pulling the plant out by the root, strimming to ground level and nipping off the flowers and seed heads before they can spread (please see image for plant identification). So, happy Rushbearing, BBQ'ing, painting, prepping, weeding, planting and bashing. We look forward to seeing you all soon! Kindest regards, Ainsley Macadam



Next Parish Council Meeting

Tuesday 12th July 2022, 7.15pm, Barley Village Hall

Copies of Meeting Agendas & Minutes from Previous Meetings (etc.):

www.goldshawbooth.org.uk

Planning Applications:

Full: 22/0254/FUL. Erection of summer house, 12 Goldshaw Court, Newchurch in Pendle.

A link for further details of any planning applications can be found here:

www.goldshawbooth.org.uk

Rush Bearing and Crowning of Rush Bearing Queen at St. Mary's, Newchurch

Saturday 16th July 2022.

Starts around 2pm but do check.

Procession from school to top of village, then back to church for a short service and then possibly tea and biscuits.

Malkin Morris and the Roughlee Ruffians hope to support this.



Fundraiser afternoon tea with fizz and open gardens for St. Mary's Church, Newchurch

Saturday 9th July 2022, from 2.00 to 4.30pm at 64, Holden Road, Brierfield, BB9 5PR.

Stall-holders welcome

Tickets £5.00

Contact familycrewe@hotmail.com for more details or check St. Mary's Facebook page

Friends of Newchurch

100 Club

The results for the Friends of Newchurch School 100 Club Draw for June are

£25 Number 54 Valerie Roberts.

£20 Number 66 Ruth Nutter.

£15 Number 89 Michael Eardley.

Congratulations to the winners and thank you to everyone who takes part!



Roughlee Parish Council

The month of June has been very busy in the life of the village but things promise to be much quieter during the holiday period over the next couple of months.

Perhaps the highlight was the Queen's Platinum Jubilee celebration on the 4th June. This was a joint enterprise between the three local villages and involved a tremendous effort by many local volunteers. It also revealed the depth of local talent, perhaps best illustrated by the hugely successful group known as the Real Village People. The event was also a financial success allowing for contributions to local charities.

Roughlee Village Centre was also busy with the Pendle Pub Walk on 18th June and the Parish Gathering on the 20th. Catering for the Pub Walk was a long and exhausting day for the volunteers involved but they can take pride in a highly successful day which has raised a significant sum of money for Pendleside Hospice. The Parish Gathering held on the evening of the 20th was a mixture of formal presentations on Parish matters, a really interesting presentation by Lee Hunt on the night sky and entertainment by the Real Village People. The evening which included a glass of wine and wonderful nibbles provided by villagers was attended by some 58 people and was a great success.



Also ongoing in June are the efforts of FORA to keep the village litter free and looking great during the judging for the Lancashire Best Village Competition.

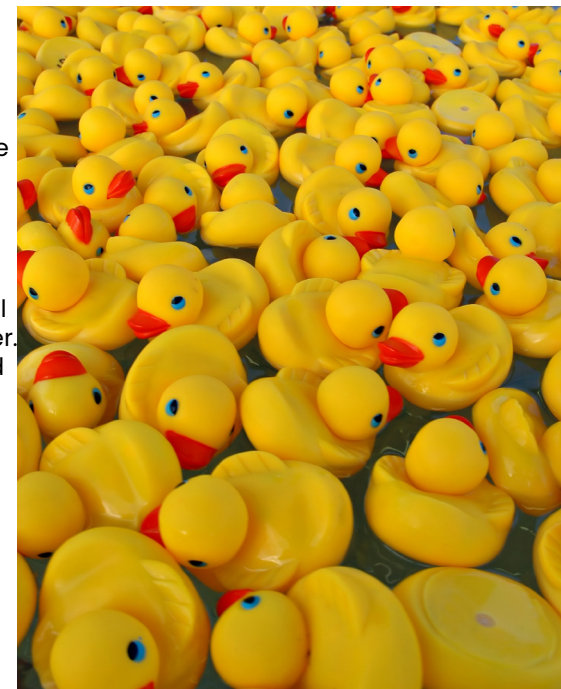
Much work has been carried out notably on the planting boxes and restoring the many benches. Work to keep up appearances will continue throughout July and August.

Looking forward into August the annual Duck Race and associated celebrations are scheduled for Saturday 13 August. Look out for details on the notice boards and the website.

Finally I want to mention the dates of our next two Parish Council meetings which will be on the 1st August and the 5th September. These meetings are open to the public and we encourage villagers to attend to ask questions and participate.

I wish you all a great summer.

Andrew Walker



Roughlee Village Centre - Dates for 2022

Sat 13 August	Duck Race
Sun 30 October	Pendle Halloween Festival
Sat 5 November	Witch Wines
Fri 2 December	Dickensian Christmas Fayre
Sat 17 December	Roughlee Christmas Boogie

Full details will be advertised at www.roughlee.org.uk

Don't forget! RVC is available for hire to private events at very reasonable prices. See the website for further details or call Gail on 01282 696997.

POLICE SURGERY

at

ROUGHLEE VILLAGE CENTRE

FRIDAY 8th JULY

2pm – 4pm

You are invited to come along to meet your local
police officers and ask any questions

EVERYONE IS WELCOME

ROUGHLEE VILLAGE COMPETITION

**For a Hanging Basket, Planter
or Group of Planters**

**Prizes sponsored by Salterforth
Nurseries and Garden Centre**

**Entry forms will be available from the 20th
June on the Roughlee Website, Roughlee
Then & Now Facebook page, Bay Horse Inn,
or at the Parish Gathering.**

Free competition, entry by 16th July

ONE Entry per property

Judging period mid July to end August



Parish Contacts

Barley with Wheatley Booth

www.barleyparish.uk
www.barleyvillagehall.org

Meetings are held at 7.30pm in
Barley Village Hall on 2nd Wednesday
in the month

Parish Council Chairman

Derek Heap t: 692 264
derekheap1@googlemail.com

Parish Council Clerk

C Heap
clerk@barleyparish.uk

Goldshaw Booth: Newchurch, Sabden Fold & Spenbrook

www.goldshawbooth.org.uk

Meetings are held at 7.15pm at Barley
Village Hall on the 2nd Tuesday of every
month.

Parish Council Chairman

s.a.macadam786@btinternet.com

Acting Council Clerk

Heather Robbins
clerk@goldshawbooth.org.uk

Roughlee Booth

www.roughlee.org.uk

meetings are held at 7pm in
Roughlee Village Centre on the 1st
Monday of the month.

Parish Council Chairman

Andrew Walker t: 07808 003035
ajwplanning@hotmail.com

Parish Council Clerk

Mary Reed t: 611 126
roughleeclerk591@gmail.com

MP & Councillors

MP for Pendle

Andrew Stephenson t: 01282 614 748
andrew.stephenson.mp@parliament.uk

Councillor

Carlo Lioni
carlo@lioni.co.uk

St. Mary's Church

Vicar

Rev. Julie Smith t: 613 206
jls446439@gmail.com

Curate

Rev. David Hargreaves
da_hargreaves@hotmail.com

Warden

Kathleen Wilkinson t: 617 971
brianwilco@tiscali.co.uk

Warden

Douglas Bull
douglas@douglasbull.co.uk

Secretary

Virginia Crewe
familycrewe@hotmail.com

Treasurer

Peter Crewe
familycrewe@hotmail.com



St Mary's Church

Our Parish Church exists to be the people of God, through
faith in Jesus Christ in the power of the Holy Spirit,
worshipping Him, making disciples and serving others.

Services at St. Mary's in July

3rd July 9.30am	BCP Holy Communion
10th July 9.30am	Holy Communion
16th July	Rushbearing meet at school for procession with Morris dancing, crowning and service in church followed by tea and cake.
17th July 9.30am	Rushbearing Communion
24th July 9.30am	All Age Worship
31st July 9.30am	Morning Prayer

Everyone Welcome to any of the services.

Contact the Vicar for more details

Articles for the August edition should be sent to lee@underpendle.com by
27.07.2022